

Cancer Control - Setting the Focus on Unique Asian Pacific Contributions



20th
**Asiapacific
Cancer
Conference**

1st Announcement

November 12-14, 2009

Tsukuba International Congress Center (Epochal Tsukuba)

President : Hideyuki Akaza (Dept. of Urology, Univ. of Tsukuba)

Contents

Greeting	1
Organization	2
Scientific Program	4
Registration	6
Call for Abstracts	8
Hotel Accommodation	9
Tours	10
Access	12
General Information	13

Conference Information

Dates	November 12 (Thu.) -14 (Sat.), 2009
Venue	Tsukuba International Congress Center (Epochal Tsukuba) 2-20-3, Takezono, Tsukuba, Ibaraki, 305-0032, Japan Tel: +81-29-861-0001 Fax: +81-29-861-1209 http://www.epochal.or.jp/eng/index.html
Theme	Cancer Control - Setting the Focus on Unique Asian Pacific Contributions
Official Language	English
Important Dates	Abstract Submission: March 3 (Tue.) -June 1 (Mon.), 2009 Notification of Abstract Acceptance: End of August, 2009 Pre-Registration: May 14 (Thu.) -October 15 (Thu.), 2009
Organizer	University of Tsukuba Graduate School, Urology and Andrology Tennodai, Tsukuba, Ibaraki, 305-8575, Japan Tel & Fax: +81-29-853-3223
Secretariat	c/o Japan Convention Services, Inc. Daido Seimei Kasumigaseki Bldg. 18F 1-4-2, Kasumigaseki, Chiyoda-ku, Tokyo 100-0013, Japan Tel: +81-3-3508-1214 Fax: +81-3-3508-1302 E-mail: 20th-apcc@convention.jp
Website	http://www.apcc2009.org

20th APCC will be held in conjunction with " The 18th annual meeting in Preventive Nephrology and Urology (Japanese Session Only)", on Fri, November 13 and Sat, 14.

Greeting

It is my great pleasure to inform you that the 20th Asia Pacific Cancer Conference (20th APCC) will be held from November 12 to 14, 2009 at the Tsukuba International Congress Center (Epochal Tsukuba) in Tsukuba, Ibaraki, Japan.

The Asia Pacific Cancer Conference has as its objectives to facilitate, coordinate, and promote research on cancer epidemiology, prevention, diagnosis, and treatment, as well as to contribute to the improvement and availability of cancer health care in the Asia Pacific region, thereby working for the development of both academe and culture and the betterment of human welfare.

We have set the theme of this meeting as “Cancer Control - Setting the Focus on Unique Asian Pacific Contributions”. As the upcoming conference will mark its 20th anniversary, we will go beyond conventional presentations and draw up concrete recommendations by re-evaluating epidemiological characteristics of cancer in the Asia Pacific region, as well as carrying out comparative studies with data from the West, and the characteristics identified will serve as the basis for positive discussions aimed at achieving proper prevention, diagnosis, and treatment of cancer. To that end, working groups on cancers that are prevalent in the Asia Pacific region, such as lung, gastric, colon, liver, breast, uterus, kidney, bladder, and prostate cancers, will be launched a year ahead of the conference to initiate group discussions. The results will be presented at the plenary session to a wider audience and compiled as the final recommendation.

I look forward to your contribution and support to the 20th Asia Pacific Cancer Conference as well as submission of your abstracts and participation in the meeting.

With best wishes



A handwritten signature in black ink that reads "Hideyuki Akaza". The signature is written in a cursive style.

Hideyuki Akaza

Department of Urology, University of Tsukuba
President, the 20th Asia Pacific Cancer Conference

Organization (Tentative)

CONFERENCE ORGANIZING COMMITTEE

President

Hideyuki Akaza (Japan)

Vice President

Malcom Moore (England)

Committee Member

Setsuo Hirohashi (Japan)
Norie Kawahara (Japan)
Tomoyuki Kitagawa (Japan)
Suminori Kono (Japan)
Kazuo Tajima (Japan)
Takashi Takahashi (Japan)
Shinkan Tokudome (Japan)
Tohru Masui (Japan)
Margaret McJannett (Australia)
Xishan Hao (China)
Jinghai Tang (China)
You-Lin Qiao (China)
Arun Kurkure (India)
Viswanathan Shanta (India)
Sutjahjo Endardjo (Indonesia)
Rainy Umbas (Indonesia)
Ardeshir Ghavamzadeh (Iran)
Sagimbek I. Iginov (Kazakhstan)
Nurbek S. Iginov (Kazakhstan)
Gulnura S. Iginova (Kazakhstan)
Jae Kyung Roh (Korea)
Mohamed Ibrahim Bin A Wahid (Malaysia)
Shamsul Azhar Shah (Malaysia)
Cheng Har Yip (Malaysia)
Balman Singh Karki (Nepal)
Adriano V. Laudico (Philippine)
Christopher Cheng (Singapore)
Sarath Abeyakoon (Sri Lanka)
Thiravud Khuhaprema (Thailand)

Scientific Committee

Hideyuki Akaza (Japan)
Nobuyuki Hamajima (Japan)
Ichinosuke Hyodo (Japan)
Yuichi Ishikawa (Japan)
Norie Kawahara (Japan)
Tohru Masui (Japan)
Jun Miyake (Japan)
Noriyuki Moriyama (Japan)
Seiji Naito (Japan)
Tetsuo Noda (Japan)
Nagahiro Saijo (Japan)
Mitsuru Sasako (Japan)
Tomotaka Sobue (Japan)
Sumio Sugano (Japan)
Kazuo Tajima (Japan)
Ei Ueno (Japan)
Hiroyuki Yoshikawa (Japan)

International Member

Malcom Moore (England)
Xishan Hao (China)
Yuan-kai Shi (China)
Arun Kurkure (India)
T. Rajkumar (India)
Ardeshir Ghavamzadeh (Iran)
Jae Kyung Roh (Korea)
Mohamed Ibrahim Bin A Wahid (Malaysia)
Thiravud Khuhaprema (Thailand)

Honorary Advisory Committee

Kunio Aoki (Japan)
Tadao Kakizoe (Japan)
Hiroshi Kobayashi (Japan)
Haruo Sugano (Japan)
Suketami Tominaga (Japan)

Secretary-General

Toru Shimazui (Japan)

Financial Officer

Naoto Miyanaga (Japan)

APFOCC EXECUTIVE COMMITTEE

President

Hideyuki Akaza (Japan)

Vice President

Gurcharan Singh (Malaysia)

Secretary General

Kazuo Tajima (Japan)

Treasurer

T. Rajkumar (India)

Council Members

Xishan Hao (China)

G Soehartati (Indonesia)

Jae Kyung Roh (Korea)



APFOCC MEMBERSHIP

Australian Cancer Society (Australia)

Chinese Anti-Cancer Association

(China)

The Chinese Oncology Society

(Taiwan, China)

Hong Kong Anti-Cancer Society

(Hong Kong, China)

Indian Cancer Society (India)

Cancer Institute (W.I.A.) (India)

Indonesian Cancer Foundation

(Yayasan Kanker Indonesia) (Indonesia)

Indonesian Society of Oncology

(Indonesia)

Haematology Oncology & BMT (Iran)

Japanese Cancer Association (Japan)

Japan National Committee for the UICC

(Japan)

Kazakh Research (Kazakhstan)

Korean Cancer Association (Korea)

International Health Relation, Department

of Ministry of Health (Kuwait)

Malaysian Oncological Society

(Malaysia)

B.P. Koirala Memorial Cancer Hospital

(Nepal)

Pakistan Society for Cancer Control

(Pakistan)

Philippine Cancer Society (Philippines)

The Singapore Cancer Society

(Singapore)

National Cancer Institute (Sri Lanka)

The Oncological (Cancer) Society of

Thailand (Thailand)

Scientific Program (Tentative)

Time Table			
	Morning	Afternoon	Evening
November 12 Thursday	Opening Remark Keynote Lecture Poster Sessions	Luncheon Seminars (Lunch included) Consensus Working Group Meetings (1-15) Oral Sessions Poster Sessions	Evening Seminar Welcome Reception
November 13 Friday	Working Group Report (1-3) Invited Lecture Poster Sessions	Luncheon Seminars (Lunch included) General Assembly Working Group Report (4-7) Oral Sessions Poster Sessions	Evening Seminar Farewell Reception
November 14 Saturday	Working Group Report (8-10)	Luncheon Seminars (Lunch included) Working Group Report (11-15) Closing Remark	

Program

■ Plenary session

● Keynote Lecture

Dr. David Hill (President, UICC, Anti-Cancer Council of Victoria, Australia)

● Invited Lecture

● Consensus Working Group

〈Summary〉

Working group (WG) on each cancer that shows the difference in its morbidity and mortality among the patients between Asia-Pacific and Western region will be organized. The purpose of these WGs is to construct the strategy to decrease its morbidity and mortality, discovering the factor of the cancer by comparing its epidemiological backgrounds, which leads to the scientific and clinical way of solution.

<WG Constitution>

WG will be formed according to the following theme, inviting experts of each field of epidemiology, basic medicine, and clinical medicine. One WG consists of 10 to 15 members with several coordinators, who overlook and facilitate its activity.

<WG Classified by “Organ.”>

- | | | |
|------------------|-------------------|----------------------------|
| 1. Lung cancer | 2. Hepatic cancer | 3. Gastric cancer |
| 4. Colon cancer | 5. Breast cancer | 6. Uterine cervical cancer |
| 7. Kidney cancer | 8. Bladder cancer | 9. Prostate cancer |

<WG Classified by “Theme”>

Additional WG should clarify future directionality (generalization, the spread, cooperation, and support) while comparing the Western situation with Asia about the following themes.

10. Current status in clinical trial and approval of chemotherapeutic agents in Asia
11. Palliative medicine and psychiatry
12. Radiation oncology
13. Medical Oncology
14. Cancer registry
15. Epidemiological study

■ Oral Sessions / Poster Sessions

■ Business Meetings

Executive Council Meeting : 12:00-13:00, November 13 (Fri.)

General Assembly : 13:00-14:00, November 13 (Fri.)

■ Social Events

Welcome Reception : 18:30-20:00, November 12 (Thu.)

Farewell Reception : 18:30-20:00, November 13 (Fri.)

Registration

■ Registration Fees

Status	Pre-registration (From May 14 to Oct 15)	On-site Registration
Regular* ¹	30,000 yen	40,000 yen
Resident / Trainee, Medical Worker* ²	15,000 yen	20,000 yen
Student/Graduate Student* ³	5,000 yen	5,000 yen
Accompanying person* ⁴	5,000 yen	5,000 yen

* Deadline for pre-registration: Oct 15 (Thu.), 2009

*1 Regular means a doctor, and a person working for a commercial supplier in the industry.

*2 Resident / Trainee must be within 5 years of graduating from a medical school and is required to send an official letter providing such status (signed by your immediate superior) to the registration desk by fax, post or e-mail.

Medical Worker (Non-doctor) means a nurse, a technician and others working for a medical institution, but not a person working for a commercial supplier in the industry.

An official certificate or a letter signed by your immediate superior must be sent to the registration desk by fax, post or e-mail.

*3 Student participant is required to send a copy of student ID to the registration desk by fax, post or e-mail.

*4 Accompanying Person must be a spouse or a family member of the registered delegate.

● “The 18th annual meeting in Preventive Nephrology and Urology (Japanese session Only)” is held at Tsukuba International Congress Center from Nov 13 (Fri.) to Nov 14 (Sat.).*

* Participants of 20th APCC are admitted to the scientific programs of “The 18th annual meeting in Preventive Nephrology and Urology”.

● The 20th APCC is accredited by the Japanese Board of Cancer Therapy to acquire 3 credits for application of the General Clinical Oncologist.

■ Registration Fee Inclusions

Congress registration includes the following:

Regular / Resident / Trainee, Medical Worker / Student

- Admission to scientific programs of the Congress
- Documentation including a book of abstracts
- Opening Remark, Welcome Reception, Farewell Reception and Closing Remark

Accompanying persons

- Opening Remark, Welcome Reception, Farewell Reception and Closing Remark

* Accompanying persons will not be admitted to scientific programs other than the exhibition.

■ Registration Procedure

On-line registration will be available from May 14 (Thu.), 2009.

The congress web site is as follows:

URL: <http://www.apcc2009.org>

* Registration by e-mail or phone cannot be accepted.

■ Payment Method

All payments must be made in Japanese yen by bank transfer or with credit card.
No other type of payment will be accepted.

1. Bank transfer (telegraphic transfer only)

Please note that all transfer charges must be paid by participants.

Remittance must be arranged within 10 days after registration.

Bank account details will appear on the last page during on-line registration process or will be automatically e-mailed to you after completion of on-line registration.

When arranging a bank transfer, the following information is required to fill out on the remittance form:

Overseas: Application number (issued after completion of on-line registration) and participant's name in the message field

Japanese: Participant's name in the sender's field

2. Credit card

American Express, Visa, MasterCard, Diners Club and JCB are acceptable.

■ Confirmation

You can print your confirmation and receipt out of the registration site, after your registration completed with payment.

Please remember to bring your confirmation to the congress venue to pick up your congress kit upon arrival.

■ Cancellation

Cancellation must be made to the registration desk in writing either by letter, fax or e-mail.

The amount of refund will depend on the date of cancellation, as follows:

● Cancellations received by (JST) Sep 30 (Wed.), 2009: 50% of the total will be refunded.

● Cancellations received on or after (JST) Sep 30 (Wed.), 2009: No refund.

Please note that all refunds will be made after the congress.

Transfer costs for cancellation refunds will also be applied to participants.

■ 20th APCC Registration Desk

C/o Japan Convention Services, Inc. (JCS)

Koshin Bldg 2F, 2-2 Kandnishikicho, Chiyoda-ku, Tokyo 101-0054, Japan

Tel: +81-3-3508-1250 Fax: +81-3-5283-5952

E-mail: apcc20reg@convention.co.jp

Call for Abstracts

Abstract Submission: March 3 - June 1, 2009

Deadline is the noon on June 1, 2009 (Japan Time, GMT +09:00).

All abstracts must be submitted through the
ONLINE ABSTRACT SUBMISSION SYSTEM;

URL: <http://www.apcc2009.org>

General Information for Abstract Submission

■ For Plenary Sessions (Keynote, Invited, and Consensus working group):

Online registration is not accepted for Plenary Sessions. The details of instructions will be informed later.

■ For Oral or Poster Sessions:

An author can register more than one abstract in the topics listed below.

The scientific committee will examine all submitted abstracts in order to decide whether or not accepted. The authors of accepted abstracts will be notified by e-mail by August 2009 with the notice of your presentation style, which is finalized by the scientific committee. The presenting author must register for the conference during the period of pre-registration.

All abstracts must be submitted through the online abstract submission system. For those who have difficulty accessing the online submission system on this website, please contact the secretariat via e-mail at 20th-apcc@convention.jp

Topics

Please select a category from below.

Clinical trial / Case report / Other clinical research / Basic research / Epidemiologic research

Format for Writing Abstract(s)

The abstract should be written in English.

Use standard abbreviations and place all particular or unusual abbreviations in parentheses after the first use of the full word.

The title of the paper should be in CAPITALS. Single spacing is also required (20 words).

The text of the abstract should contain subtitles such as Introduction, Background, Purpose, Methods, Results and Conclusions (800 words).

Present your picture (facial portrait) with your abstract, which is on a voluntary basis.

Only one chart per one abstract will be acceptable. However, if you submit a chart, the number of words on your text will be limited to 530 words.

A picture and chart can be registered online only, and each data size should not exceed 1 mega.

Application for Young Investigators Award

The Organizing Committees of the 20th Asia Pacific Cancer Conference encourage young investigators' participation; up to 50 participants whose abstracts are of outstanding quality will receive Young Investigators Award (a grant): Part of your travel fee and accommodation fee will be paid.

An applicant for Young Investigators Award must:

- Be under the age of 40 at the time of application;
- Be the first author of the abstract and the presenter of either an oral or poster presentation;
- Be pre-registered for the Congress and complete the payment of registration fee before your presentation;
- Obtain a visa for entering Japan prior to the Congress, if necessary.

If you are eligible for Young Investigators Award and wish to apply, please select "I apply for YIA" when you submit the abstract through the Conference Web Site.

Inquiries

Abstract Desk, Secretariat for 20th APCC Fax: +81-3-5283-5952 E-mail: 20th-apcc@convention.jp

Hotel Accommodation

* Room rates include breakfast, service charge and 5% consumption tax.

Okura Frontier Hotel Tsukuba Epochal

1min. walk to the site

Room Type	Room Rate (per person)
Single	12,100 JPY

Address: 2-20-1, Takezono, Tsukuba City, 305-0032
Tel: +81-29-852-1112

A hotel is in a convenient location right next to Tsukuba International Congress Center, EPOCHAL TSUKUBA. This allows us to provide our guests with "human-friendly services" in line with our concept of "Accessibility & Relaxation".



Okura Frontier Hotel Tsukuba

10min. walk to the site

Room Type	Room Rate (per person)	
Single	12,700 JPY	
Twin	Single Use	16,000 JPY
	Twin Use	10,300 JPY
DLX Twin	Single Use	19,600 JPY
	Twin Use	12,700 JPY

Address: 1, Azuma, Tsukuba City, 305-0031
Tel: +81-29-860-7700

An urban resort hotel with high-grade guest rooms, indoor pool, and tennis court.



Hotel Grand Shinonome

20min. walk / 5min. taxi to the site

Room Type	Room Rate (per person)	
Single	8,400 JPY	
Twin	Single Use	15,000 JPY
	Twin Use	11,550 JPY

Address: 488-1, Onozaki, Tsukuba City 305-0034
Tel: +81-29-856-2211

A hotel featuring an elegant palace style, built entirely of hinoki (Japanese cypress) with pillars of hinoki trees more than 2,000 years old.



Daiwa Roynet Hotel Tsukuba

10min. walk to the site

Room Type	Room Rate (per person)
Single	11,550 JPY

Address: 1-5-7, Azuma, Tsukuba City, 305-0031
Tel: +81-29-863-3755

2009 Summer New Open

Tours

● COURSE 1 Tokyo 1day Tour

Date: November 12 (Thu.)
Price: JPY12,000 (Lunch included)

National Diet Building

This is the place where both houses of the Diet of Japan meet, built in 1936. It is constructed purely out of Japanese building materials, with the exception of the stained glass, door locks and pneumatic tube system.



Imperial Palace Plaza

The Imperial Palace Plaza comprises the moats and spacious plaza between the east side of the Imperial Palace and the Marunouchi office buildings.



Akihabara Electric Town

The Akihabara Electric Town is the world's preeminent playground for electronics and personal computer buffs and where, it is said, any electronic device ever made is available.



● COURSE 2 Mt. Tsukuba 1day Tour

Date: November 13 (Fri.)
Price: JPY12,000 (Lunch included)

Ruins of Hirasawa Province Office

Ruins of Hirasawa Province Office were built almost 1200 - 1300 years ago (Nara and Heian period). They were designated a National Historical Site in 1980.



Tsukubasan Shrine

Tsukubasan Shrine is one of the oldest shrines in this country, and its name appears in the poems written in the 8th and 10th centuries. The shrine respects Mt. Tsukuba as the object of worship, and its hall of worship on the mountainside is visited by lots of tourists every year. The shrine is also renowned as the god of business thriving, talismans, and matchmaking.

Ohmidou

The shrine, built in 782, is well known for 25th point of 33 Bando fudashos, which you can complete a religious pilgrimages by getting the stamp on a pilgrimage note at each shrine in Kanto area.



Mt. Tsukuba

Mt. Tsukuba, situated in the center of Ibaraki, consists of two great peaks, Mt. Nyotai (876 meters above the sea level) and Mt. Nantai (870 meters above the sea level). Between the two peaks, there is a view spot called Miyukigahara, from which you can get a fine view of the Kanto Plain – the largest plain in the country. For its beautiful and dignified figure, the mountain is usually contrasted with the Mt. Fuji, the greatest mountain of Japan. So they say "Mt. Fuji in the west and the Mt. Tsukuba in the east."



● COURSE 3 Tsukuba City 1day Tour

Date: November 14 (Sat.)
Price: JPY12,000 (Lunch included)

Seikoin Temple

It is very similar to the famous Kiyomizu Temple in Kyoto and is counted among One Hundred Famous Views of Ibaraki. When you stand at the stage of the main building of the temple, you will encounter super spectacle scenery just like a beautiful painting.



Ibaraki Prefectural Flower Park

Here you will be charmed by seasonal flowers and plants (ex. pansies, camellias in November) and 30,000 roses of 650 species,.



Kasama Geijyutunomori Park

There are many entertaining facilities in Kasama Geijyutunomori Park; Kasama Ceramic Art Museum, pottery stores, café, etc. Kasama Ceramic Art Museum's collection consists of "Great Masters of Modern and Contemporary Japanese Ceramic Art", contains Kasamayaki pots made by Matsui Kosei, who is the Living National Treasure. The museum has the souvenir shop and a restaurant as well.



Sumida river Cruise

It will show not only the modern skyline of the city but also provide glimpses of the Tokyo of yesteryear. The most common is a boat that circles between Asakusa and Hinode Pier. Sights along the way include the 12 bridges of the Sumida, traditional neighborhoods of old Edo, the unique Asahi Beer Building and the beautiful Hamarikyu Gardens.

Asakusa Nakamise Shopping Arcade

INakamise, a 250-meter approach to Sensoji Temple, is one of the oldest shopping streets in Japan.



Sensoji Temple

Sensoji is the oldest and most impressive temple in Tokyo. The main hall was first built in 645 to house a tiny golden statue of Kannon, the goddess of mercy.



General Information for Hotels and Tours

OFFICIAL TRAVEL AGENT

JTB Global Marketing & Travel Inc.
 Convention Center (CD100739-355)
 2-3-11 Higashi-Shinagawa, Shinagawa-ku, Tokyo 140-8604, Japan
 Tel: +81-3-5796-5445 Fax: +81-3-5495-0685 E-mail: apcc2009@jtb.jp

HOTEL ACCOMMODATION

- Reservations will be processed in order of receipt of application form. If the hotel is fully booked, you will be assigned to a room at a hotel of the same grade.

TOURS

- Tour fare includes 1) Sightseeing and transfers as shown in the itineraries, by motor coach and/or sightseeing boats on a seat-sharing basis, plus admission fees to temple, shrine etc.; 2) Meals as specified in each itinerary; 3) English-speaking guide services.
- All tours may be canceled when the number of participants fail to reach 15.
- Places to visit are subject to change with or without notice.

APPLICATION AND PAYMENT FOR HOTEL AND TOURS

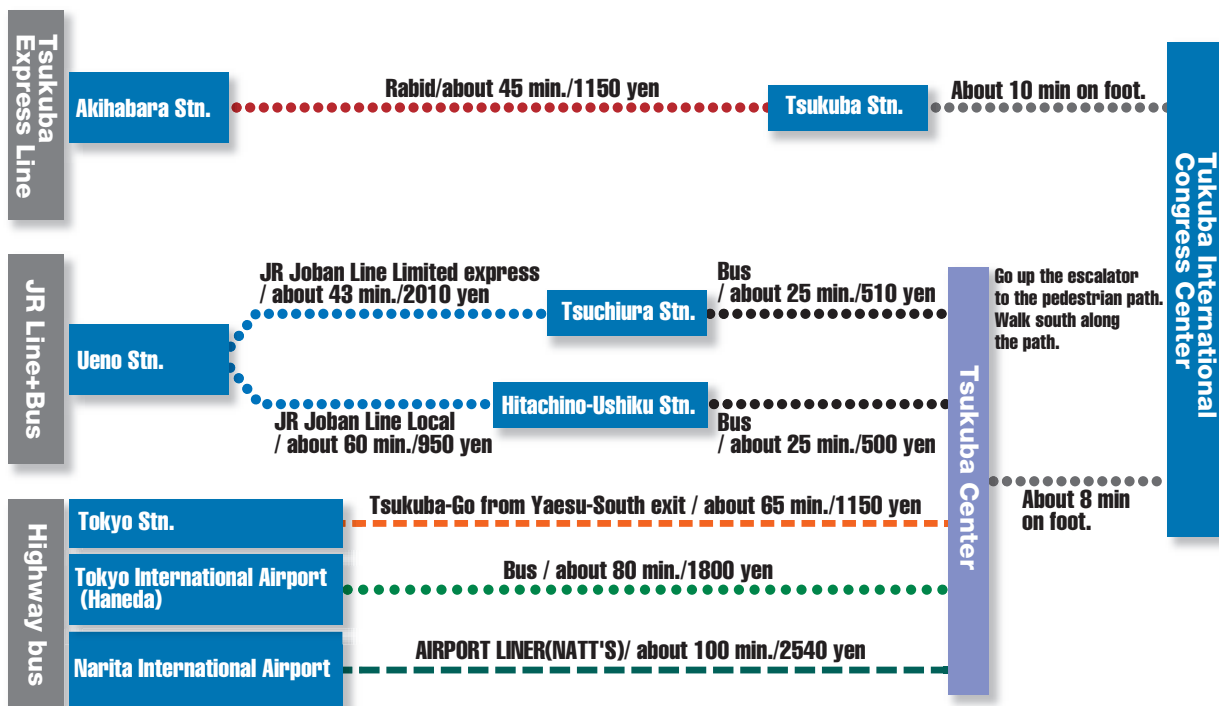
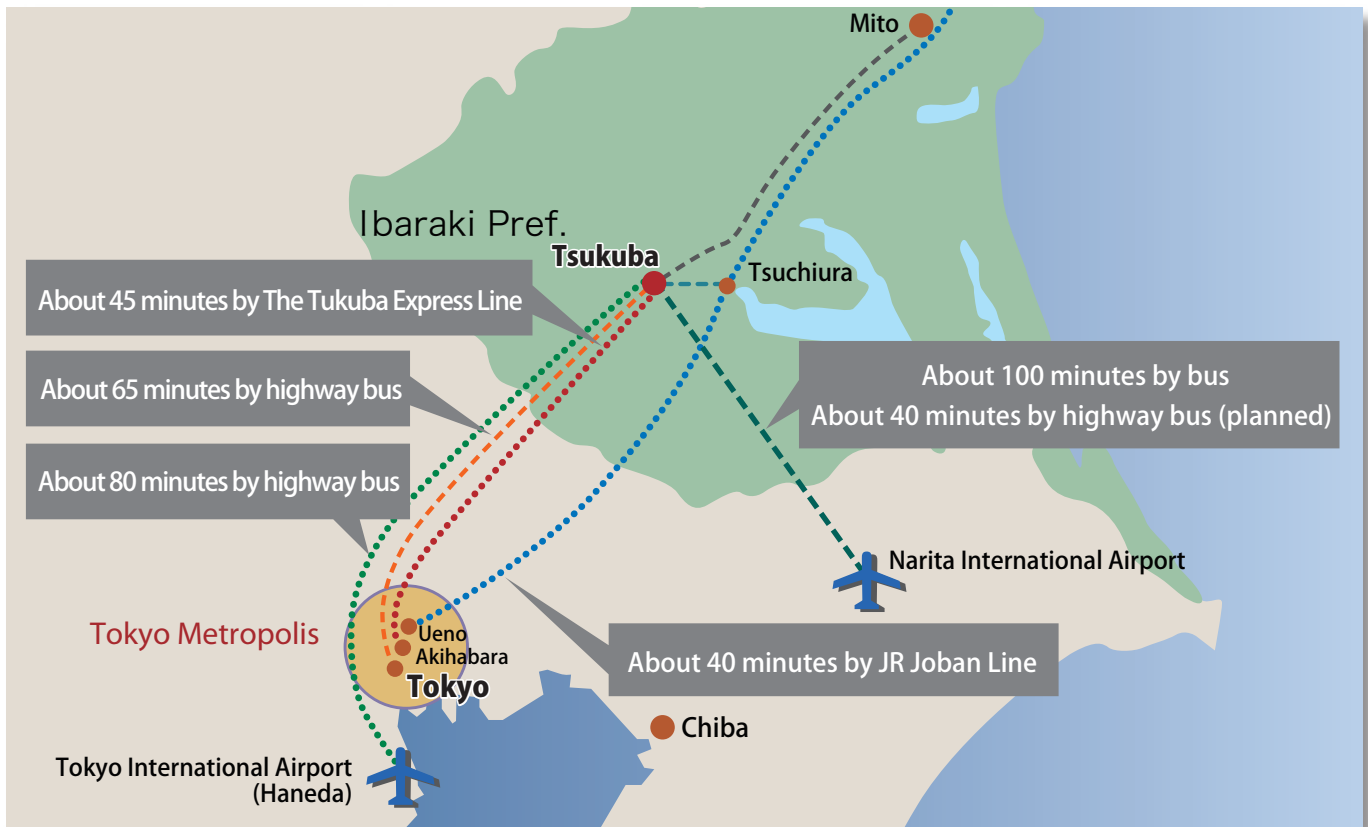
- Participants who wish to reserve hotel accommodations and tours should apply online to reach JTB GMT no later than October 9. Registration on web will open May 14th, 2009. Application should be accompanied by a remittance of the total amount of the room charge and/or the total tour fare due JTB GMT.
- No reservation will be confirmed in the absence of this payment. All payment must be in Japanese yen. If the remittance covers more than one person, or if the name of the remitter is not the same as the participant's, please inform us the name of each participant. Payment should be in the form of:
 - One of the following credit cards:
 1. VISA 2. MasterCard 3. Diners Club 4. AMEX 5. JCB
 - A bank transfer to JTB Global Marketing & Travel Inc. (Message: CD 100739-355)
 Account at The Bank of Tokyo-Mitsubishi UFJ, Ltd. Shin-Marunouchi Branch (swift code: BOTKJPJT)
 1-1-1 Otemachi, Chiyoda-ku, Tokyo 100-8114 Japan (Account number: 4760343)

CANCELLATION

- In the event of cancellation, written notification should be sent to JTB GMT. The following cancellation fees will be deducted before any refund is made.

Hotels: Up to October 20th	None
From October 21st to 29th.....	20% of daily room charge
From October 30th to November 9th	40% of daily room charge
November 10th and after	80% of daily room charge
On the day of arrival or no notice given	100% of daily room charge
Tours: 10 - 8 days before the departure day of one day tours	20% of tour fare
7 - 2 days before	30% of tour fare
1 day before	40% of tour fare
Prior to starting time on the departure day	50% of tour fare
After departure or failure to show without notice.....	100% of tour fare

Access



General Information

PASSPORT AND VISA

To visit Japan, you must have a valid passport. A visa is required for citizens of countries that do not have visa-exempt agreements with Japan. Please contact the nearest Japanese Embassy or Consulate for visa requirements.

DUTY FREE IMPORT

Personal belongings and professional equipments can be brought into Japan duty free as long as the custom officers deem their contents and quantities reasonable. You can also bring in up to 400 cigarettes, 500 grams of tobacco or 100 cigars; 3 bottles of alcoholic beverages; 2 ounces of perfume; and gifts or souvenirs whose total market price is less than 200,000 yen or its equivalent. There is no allowance for tobacco or alcoholic beverages for persons aged 19 years or younger. Firearms and other types of weapons, and narcotics are strictly prohibited.

INSURANCE

The organizer cannot accept responsibility for accidents that might occur. Delegates are encouraged to purchase travel insurance before leaving their home country. Insurance plans typically cover accidental loss of belongings, medical costs in case of injury or illness, and other possible risks of international travel.

CLIMATE

The temperature in Tsukuba during the period of the Conference ranges between 9-16 degrees Celsius.

CURRENCY EXCHANGE

Only Japanese yen (¥) is acceptable at regular stores and restaurants. Certain foreign currencies may be accepted at a limited number of hotels, restaurants and souvenir shops. You can buy yen at foreign exchange banks and other authorized money exchangers on presentation of your passport.

TRAVELER'S CHECKS AND CREDIT CARDS

Traveler's checks are accepted only by leading banks and major hotels in principal cities, and the use of traveler's checks in Japan is not as popular as in some other countries. VISA, MasterCard, Diners Club, and American Express are widely accepted at hotels, department stores, shops, restaurants and nightclubs.

TIPPING

In Japan, tips are not necessary anywhere, even at hotels and restaurants.

ELECTRICITY

Electric current is uniformly 100 volts, AC, throughout Japan, but with two different cycles: 50 in eastern Japan including Tsukuba and Tokyo, and 60 in western Japan including Kyoto and Osaka. Leading hotels in major cities have two outlets of 100 and 220 volts but their sockets usually accept a two-leg plug only.

SHOPPING

Shops and other sales outlets in Japan are generally open on Saturdays, Sundays and on national holidays as well as weekdays from 10:00 to 20:00. Department stores, however, are closed on one weekday, differing by store, and certain specialty shops may not open on Sundays and national holidays.

20th Asia Pacific Cancer Conference

Supporting Societies : Japan Cancer Society / Japan Society of Clinical Oncology / The Japanese
(tentative) Cancer Association / UICC (The International Union Against Cancer)
Cabinet Office, Government of Japan / The Ministry of Foreign Affairs of
Japan / Ministry of Education, Culture, Sports, Science and Technology-
Japan / Ministry of Health, Labour and Welfare / Ministry of Economy,
Trade and Industry / Ministry of Land, Infrastructure, Transport and
Tourism / Japan International Cooperation Agency / Ibaraki Prefectural
Government / City of Tsukuba / University of Tsukuba

URL: <http://www.apcc2009.org>